



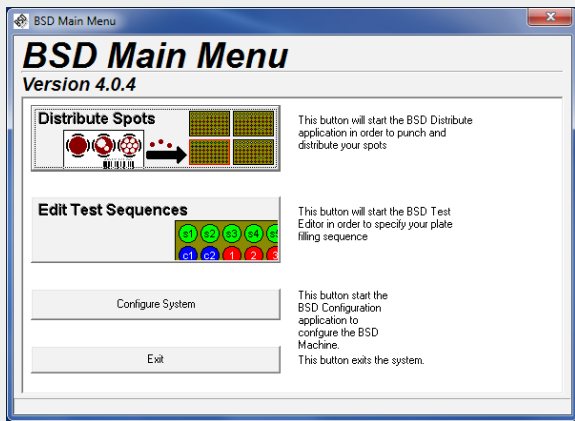
Productos para Laboratorio

[www.acefesa.com](http://www.acefesa.com)



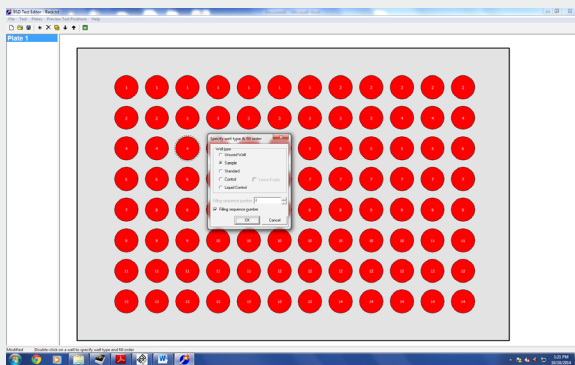
# BSD 600DUET

LABORATORY SAMPLE PUNCHER



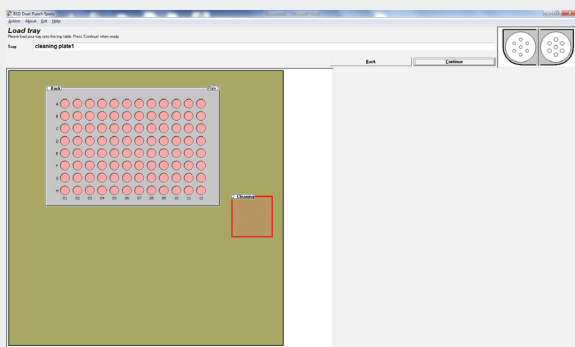
### Main Menu

- The main menu allows entry to software modules.
- Access to each module is controlled using Supervisor and User level passwords.



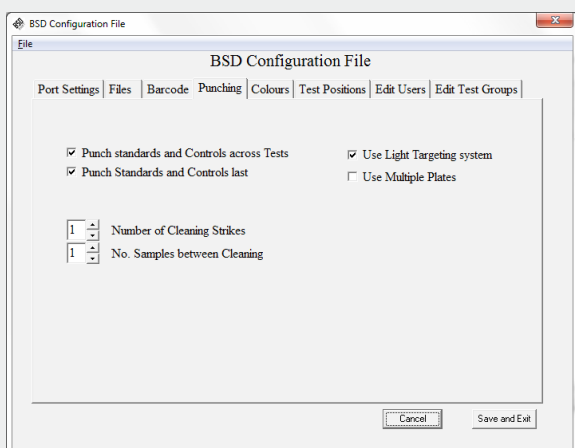
### Test Editor Module

- Used to define and program individual tests.
- Set punch sizes, number of disks and filling order for individual plates.
- Allows individual definition of each well for sample, test or standard.
- Set cleaning strikes.
- Up to 10 disks per well can be specified.



### Distribution Module

- Used to run punching tests defined in the test editor.
- Displays the current punching pattern and progress.
- Shows instrument status messages for routine operation



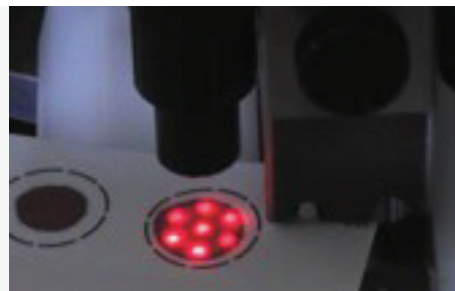
### Configuration Module

- Used to view and change the instrument configuration, preferences and options.
- Change settings and calibrate the instrument during installation.
- Supervisor access level is required



### 1. BSD Light Targeting System

- Guides the user for best sample position.
- Automatically illuminates the number of punches chosen and the size of each punch exactly at the punch site.
- Enables the user to punch quickly and accurately, delivering optimal results irrespective of spot morphology.



### 2. Precision Punch and Die

- Gauge manufactured tool steel components
- A range of single and dual punch combinations is available for compatibility with laboratory procedures and processes.



### 3. Dust Extraction System

- Vacuums away paper dust from the punch site to a disposable filter reducing the potential of instrument and sample contamination.



### 4. Auto-Trigger

- Eliminates the need for hand/foot switches.
- Automatically detects the presence of a sample card and punches after a pre-set time delay.



### 5. Integrated Barcode Reader

- Enables positive identification and traceability of plates, samples, controls and standards.
- Allows for traceability at all levels of the punching process, delivering unique identification information.



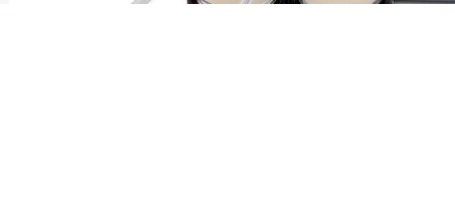
### 6. Disk Detector System

- Recognizes if a disk has not passed into the receiving well and automatically responds.
- 5 beam design for high detection reliability



### 7. Air Humidification System

- Ensures the punched disk is delivered to the correct receiving well for downstream processing and reduces the chances of well 'jumping'.



### 8. Dedicated Cleaning Receptacle

- A dedicated cleaning receptacle is provided to minimize cross-contamination issues.

		<b>BSD600DUJET</b>
<b>PLATE CAPACITY</b>		<b>Two Plates</b> 384 or 96 well standard or deep well type, PCR plate or 96 tube adaptor for screw top tubes.
<b>CLEANING (WASTE) CONTAINER</b>		Yes
<b>PUNCH SYSTEM</b>		<b>Dual</b> Two Punch Sizes
<b>STANDARD PUNCH SIZES AVAILABLE</b>		1.0, 1.2, 1.5, 2.0, 3.0, 3.2, 3.8, 4.0, 4.7 or 6.0mm
<b>QUICK RELEASE PUNCH AND DIE (MARK 4)</b>		No
<b>MULTIPLE PATTERN PUNCHING</b>		Yes
<b>LIGHT TARGETING SYSTEM</b>		Yes
<b>DISK DETECTION SYSTEM</b>		5 Beam
<b>INTEGRATED BARCODE READER</b>		Yes
<b>AIR HUMIDICATION SYSTEM</b>		Yes
<b>DUST EXTRACTION SYSTEM</b>		Optional
<b>FOOT OR HAND PUNCH ACTIVATION</b>		Yes
<b>AUTO TRIGGER PUNCH ACTIVATION</b>		Optional
<b>COMPUTER INTERFACE</b>		RS232 Port
<b>PHYSICAL DIMENSIONS (mm)</b>	<b>W</b>	650
	<b>D</b>	530
	<b>H</b>	460
<b>POWER SUPPLY</b>		110 - 240VAC



Productos para Laboratorio  
www.acefesa.com



<b>Address</b>	
<b>Phone</b>	
<b>Email</b>	
<b>Website</b>	

**ACEFE, S.A.**



**SEDE CENTRAL**  
Calle Isaac Peral, 5  
Pol. Ind. Camí Ral  
08850 Gavà, España  
Tel.: +34 936-362-002  
acefesa@acefesa.com

**DELEGACIONES**

Cataluña Norte:	Julio Mesa
Cataluña Sur:	Cristian Gimó
Centro y Sur:	Manuel Mena
Levante:	Charo Ortín
Noroeste:	Francisco Gutiérrez

☎  
Tel.: 670-906-156  
Tel.: 617-486-038  
Tel.: 617-486-039  
Tel.: 670-906-508  
Tel.: 627-449-343

@  
comercial3@acefesa.com  
comercial6@acefesa.com  
comercial5@acefesa.com  
comercial2@acefesa.com  
comercial7@acefesa.com