



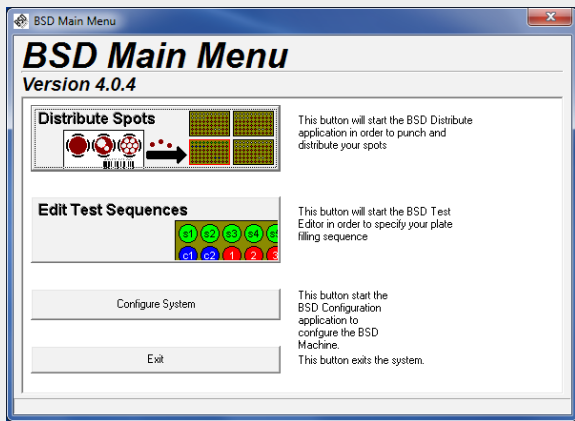
Productos para Laboratorio

www.acefesa.com



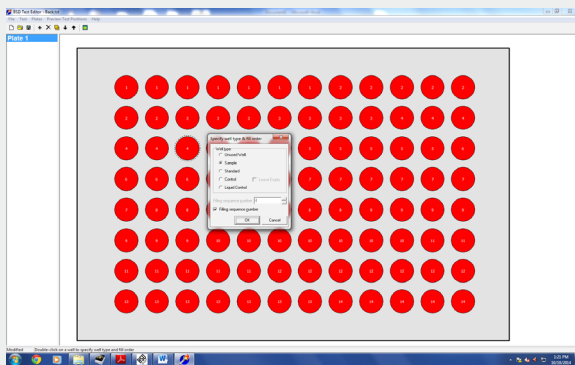
BSD 600DUET

LABORATORY SAMPLE PUNCHER



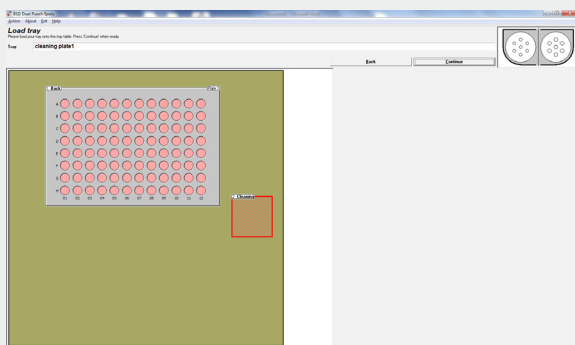
Main Menu

- The main menu allows entry to software modules.
- Access to each module is controlled using Supervisor and User level passwords.



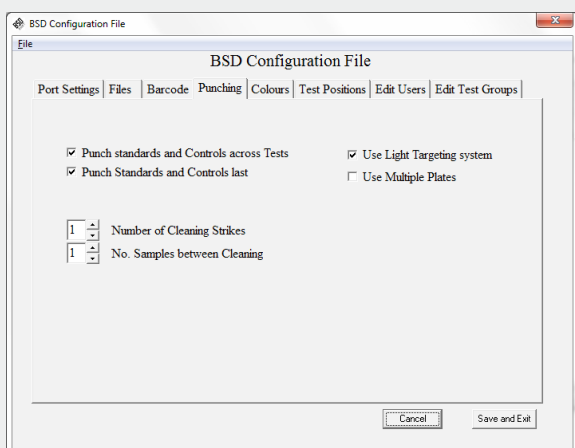
Test Editor Module

- Used to define and program individual tests.
- Set punch sizes, number of disks and filling order for individual plates.
- Allows individual definition of each well for sample, test or standard.
- Set cleaning strikes.
- Up to 10 disks per well can be specified.



Distribution Module

- Used to run punching tests defined in the test editor.
- Displays the current punching pattern and progress.
- Shows instrument status messages for routine operation



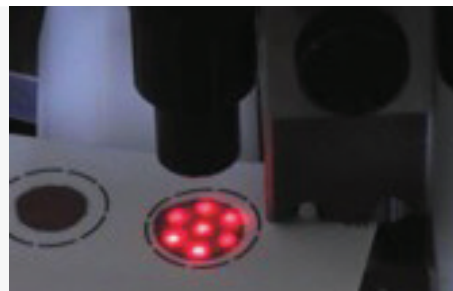
Configuration Module

- Used to view and change the instrument configuration, preferences and options.
- Change settings and calibrate the instrument during installation.
- Supervisor access level is required



1. BSD Light Targeting System

- Guides the user for best sample position.
- Automatically illuminates the number of punches chosen and the size of each punch exactly at the punch site.
- Enables the user to punch quickly and accurately, delivering optimal results irrespective of spot morphology.



2. Precision Punch and Die

- Gauge manufactured tool steel components
- A range of single and dual punch combinations is available for compatibility with laboratory procedures and processes.



3. Dust Extraction System

- Vacuums away paper dust from the punch site to a disposable filter reducing the potential of instrument and sample contamination.

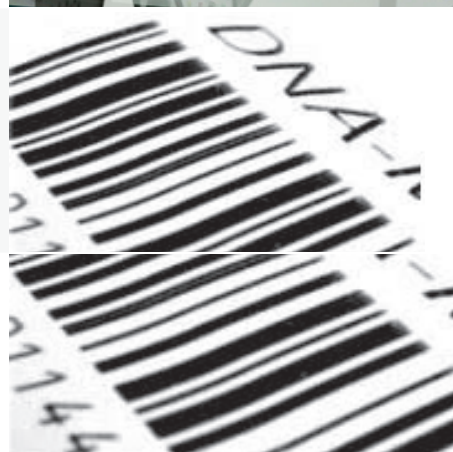
4. Auto-Trigger

- Eliminates the need for hand/foot switches.
- Automatically detects the presence of a sample card and punches after a pre-set time delay.



5. Integrated Barcode Reader

- Enables positive identification and traceability of plates, samples, controls and standards.
- Allows for traceability at all levels of the punching process, delivering unique identification information.



6. Disk Detector System

- Recognizes if a disk has not passed into the receiving well and automatically responds.
- 5 beam design for high detection reliability

7. Air Humidification System

- Ensures the punched disk is delivered to the correct receiving well for downstream processing and reduces the chances of well 'jumping'.



8. Dedicated Cleaning Receptacle

- A dedicated cleaning receptacle is provided to minimize cross-contamination issues.

		BSD600DUJET
PLATE CAPACITY		Two Plates 384 or 96 well standard or deep well type, PCR plate or 96 tube adaptor for screw top tubes.
CLEANING (WASTE) CONTAINER		Yes
PUNCH SYSTEM		Dual Two Punch Sizes
STANDARD PUNCH SIZES AVAILABLE		1.0, 1.2, 1.5, 2.0, 3.0, 3.2, 3.8, 4.0, 4.7 or 6.0mm
QUICK RELEASE PUNCH AND DIE (MARK 4)		No
MULTIPLE PATTERN PUNCHING		Yes
LIGHT TARGETING SYSTEM		Yes
DISK DETECTION SYSTEM		5 Beam
INTEGRATED BARCODE READER		Yes
AIR HUMIDICATION SYSTEM		Yes
DUST EXTRACTION SYSTEM		Optional
FOOT OR HAND PUNCH ACTIVATION		Yes
AUTO TRIGGER PUNCH ACTIVATION		Optional
COMPUTER INTERFACE		RS232 Port
PHYSICAL DIMENSIONS (mm)	W	650
	D	530
	H	460
POWER SUPPLY		110 - 240VAC



Productos para Laboratorio
www.acefesa.com



Address	
Phone	
Email	
Website	



Sede Central
Calle Isaac Peral, 5
Pol. Ind. Camí Ral
08850 Gavà, Spain
Tel: +34 936-362-002
acefesa@acefesa.com

Delegación Levante y Sur
Charo Ortín López
Tel: +34 670-906-508
comercial2@acefesa.com

Delegación Noroeste
Francisco Gutiérrez Gómez
Tel: +34 627-449-343
comercial7@acefesa.com